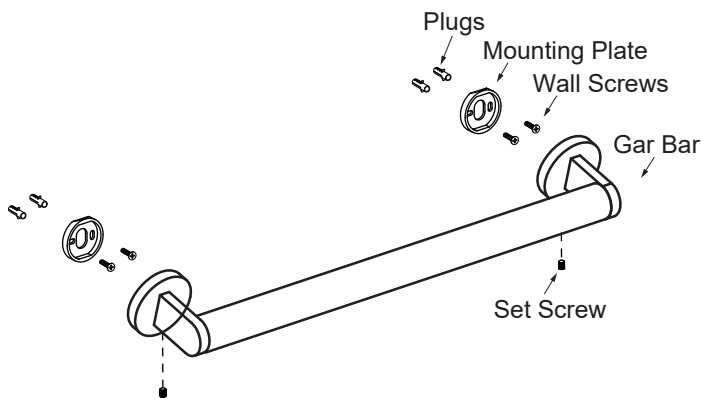


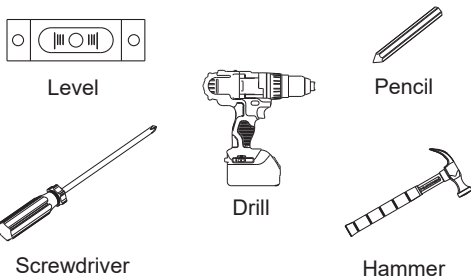
## FRANKFURT COLLECTION

### GRAB BAR

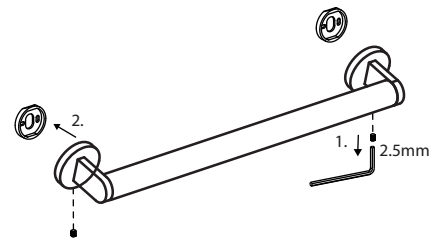
- 12" 3139512
- 18" 3139518
- 24" 3139524
- 36" 3139536
- 42" 3139542



#### Tools required for installation

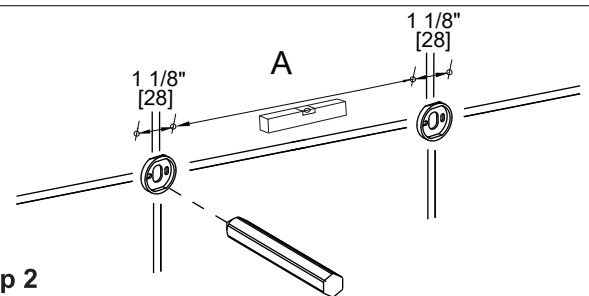


Product Code	Sizes (Inches/mm) A
3139512	10 3/4" /272
3139518	16 5/8" /422
3139524	22 1/2" /572
3139536	34 3/8" /872
3139542	41" /1042



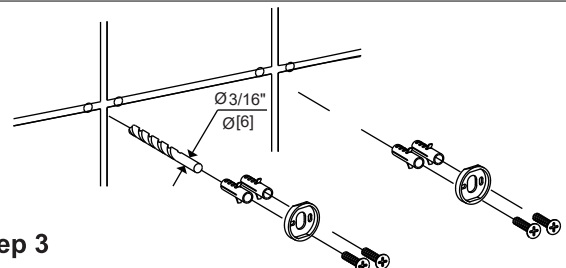
#### Step 1

Loosen the set screw on the accessory and remove the backing plates. Position the accessory against the wall and mark outline with pencil.



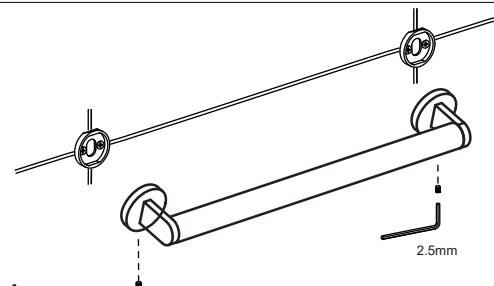
#### Step 2

Position the backing plates flat side down on the wall and mark holes with pencil.



#### Step 3

Predrill 3/16" holes on the wall to fit wall plugs. Insert wall plugs into the wall. Position backing plates flat side down over the plugs and install screws.



#### Step 4

Slide the accessory onto the backing plates and tighten the set screws using Allen key provided.