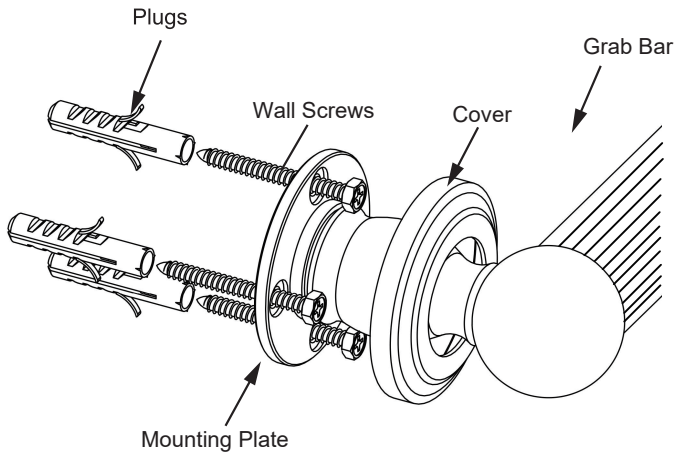


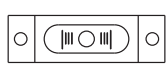
## FLORENCE COLLECTION

### GRAB BAR

- 12" 3229212K
- 18" 3229218K
- 24" 3229224K
- 36" 3229236K
- 42" 3229242K



#### Tools required for installation



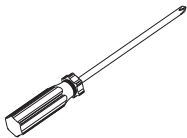
Level



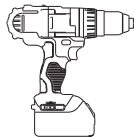
Pencil



Wrench



Screwdriver



Drill

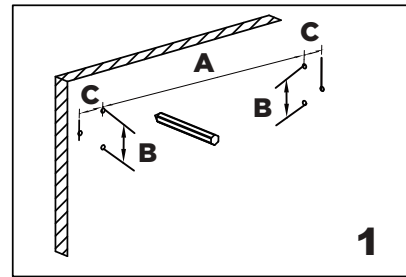


Hammer

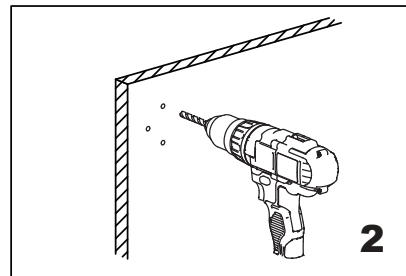
- A=Plate TOP holes center to center distance
- B=Plate TOP hole to BOTTOM hole distance
- C=Plate TOP/BOTTOM holes to MID hole distance

Product Code	Sizes (Inches/mm)		
	A	B	C
3229212K	11 3/4" /300	1 3/4"/45	1"/22.5
3229218K	17 3/4"/450	1 3/4"/45	1"/22.5
3229224K	23 5/8"/600	1 3/4"/45	1"/22.5
3229232K	31 1/2"/800	1 3/4"/45	1"/22.5
3229236K	35 1/2"/900	1 3/4"/45	1"/22.5
3229242K	42 1/8"/1070	1 3/4"/45	1"/22.5

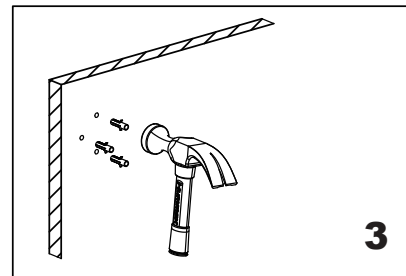
Fig.1



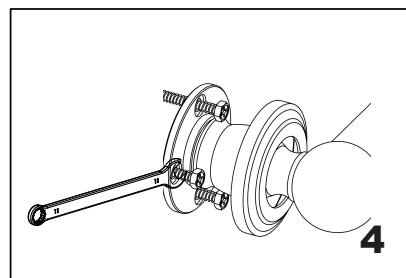
Mark (on the wall) locations of plugs through mounting plate using a pencil, refer to Fig.1



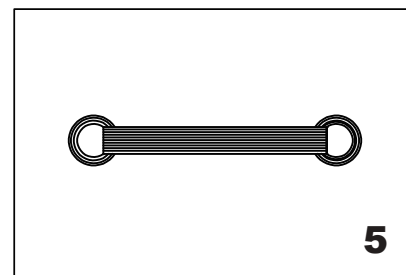
Drill 3/16" holes, make sure to keep drill level



Insert plugs into drilled holes, using a hammer to tap the plugs in, be careful not to break tile



Driver bolt nut directly into holes



Tighten the cover on the Mounting plate